

# FUEL INJECTION THROTTLE BODIES



**Single bore bodies** Replace ? with bore size.

**SF - Single bodies. 40, 42, 45 & 48mm**

- Single Throttle Body. No injector position
- Single Throttle Body. 1 injector position
- Single Throttle Body. 2 injector positions
- Single bodies. 50 - 70mm bore
- Single 50mm T.Body 0 inj.
- Single 50mm T.Body 1 inj.
- Single 50mm T.Body 2 inj.
- Single 52mm T.Body 0 inj.
- Single 52mm T.Body 1 inj.
- Single 52mm T.Body 2 inj.
- Single 54mm T.Body 0 inj.
- Single 54mm T.Body 1 inj.
- Single 54mm T.Body 2 inj.



- SF?/0/0
- SF?/0/1
- SF?/0/2



- SF50/0/0
- SF50/0/1
- SF50/0/2
- SF52/0/0
- SF52/0/1
- SF52/0/2
- SF54/0/0
- SF54/0/1
- SF54/0/2

**SFD - Single bodies 52 - 60mm bore**

- Single 50mm T.Body 0 inj.
- Single 50mm T.Body 1 inj.

- SFD??/0/0
- SFD??/0/1

**SFG - Single bodies 60 - 70mm bore**

- Single 64mm T.Body. To S2000 rules, complete
- Single 60, 64 & 70mm T.Body, complete



- SFGE1/64
- SFG?/0/0

**SF - Tapered single bodies 45, 48 & 51mm at inlet**

- Single tapered T.Body, 4,5°
- Single tapered T.Body, 1 inj., 4,5°
- Single tapered T.Body, 2 inj., 4,5°
- Special bore form, any single, add to basic

- SF?/45/0
- SF?/45/1
- SF?/45/2
- SFXX/Y/?

**SFS - Short (30mm) bodies 40, 42, 45, 38 & 50mm**

- Single Throttle Body
- Single Throttle Body 1 inj.



- SFS?/0/0
- SFS?/0/1

**ST - Single 2-bolt bodies. 30, 32, 35, 38, 40 & 42mm**

- Single 2-bolt T.Body
- Single 2-bolt T.Body 1



- ST?/0/0
- ST?/0/1

**SS - Spigot bodies 30, 32, 35, 38, 40, 42 & 45 (1 inj.), 48 & 50mm (2 inj)** Spigot and bore machined to order

- Single Spigot Body 1 inj. Up to 45mm
- Single Spigot Body 2 inj. Up to 40mm
- Single Spigot Body 2 inj. 45mm and above (larger external size)
- Special bore form, add to basic



- SS?/0/0
- SS?/0/2
- SS?/0/2
- SS?/Y/?

**Configurations for single bodies.** Add to suit the number of cylinders. For 6+ cylinders or V engines use multiple sets

- 1 body, right lever
- 1 body, left lever
- 2 bodies in line
- 3 bodies in line
- 4 bodies in line
- 5 bodies in line
- Conrod linkage, eg. 4 bodies
- Operating wheel (OWK1 or 2) - 3 bodies in line
- Operating wheel (OWK1 or 2) - 4 bodies in line
- Close coupling kit, extra

- SFK11R
- SFK11L
- SFK21
- SFK31
- SFK41
- SFK51
- SFK42
- SFK33
- SFK43
- BFK1

**Twin bore bodies**. Fuel rails (eg. type TBR) separate unless stated otherwise.

**TB - Twin bodies. DCOE style flange, 118mm long**

- Twin 40mm T.Body
- Twin 42mm T.Body
- Twin 45mm T.Body
- Twin 48mm T.Body
- Twin 50mm T.Body
- Twin 40mm T.Body Pair
- Twin 42mm T.Body Pair
- Twin 45mm T.Body Pair
- Twin 48mm T.Body Pair
- Twin 50mm T.Body Pair



- TBS40i
- TBS42i
- TBS45i
- TBS48i
- TBS50i
- TBP40i
- TBP42i
- TBP45i
- TBP48i
- TBP50i

**TH - Twin bodies. DCOE style flange, 91mm long**

- Twin 45mm T.Body
- Twin 48mm T.Body
- Twin 50mm T.Body
- Twin 52mm T.Body
- Twin 55mm T.Body
- Twin 40mm T.Body Pair
- Twin 42mm T.Body Pair
- Twin 45mm T.Body Pair
- Twin 48mm T.Body Pair
- Twin 50mm T.Body Pair
- Twin 52mm T.Body Pair
- Twin 55mm T.Body Pair



- THS45i
- THS48i
- THS50i
- THS52i
- THS55i
- THP40i
- THP42i
- THP45i
- THP48i
- THP50i
- THP52i
- THP55i

**TS - Twin bodies. DCOE style flange, 30mm**

- Twin 40mm T.Body
- Twin 42mm T.Body
- Twin 45mm T.Body
- Twin 48mm T.Body
- Twin 50mm T.Body
- Twin 40mm T.Body Pair
- Twin 42mm T.Body Pair
- Twin 45mm T.Body Pair
- Twin 48mm T.Body Pair
- Twin 50mm T.Body Pair



- TSS40i
- TSS42i
- TSS45i
- TSS48i
- TSS50i
- TSP40i
- TSP42i
- TSP45i
- TSP48i
- TSP50i

**TF - Twin Bodies. IDF flange**

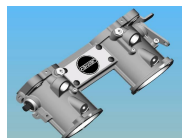
- Twin 45mm T.Body
- Twin 48mm T.Body
- Twin 50mm T.Body
- Twin 40mm T.Body Pair
- Twin 42mm T.Body Pair
- Twin 45mm T.Body Pair
- Twin 48mm T.Body Pair
- Twin 50mm T.Body Pair



- TSF45i
- TFS48i
- TFS50i
- TFP40i
- TFP42i
- TFP45i
- TFP48i
- TFP50i

**TA - Twin Bodies. IDA style flange. Fuel rails included**

- Twin 48mm T. Body
- Twin 50mm T. Body
- Twin 48mm T.Body Pair
- Twin 50mm T.Body Pair



- TAS48i
- TAS50i
- TAP48i
- TAP50i

**TC - Twin Bodies. DCNF style flange. Fuel rails included**

- Twin 40mm T.Body
- Twin 42mm T.Body
- Twin 45mm T.Body



- TC40i
- TC42i
- TC45i

**Direct to head bodies.** With fuel rails and interconnection links  
 Ford Sigma 42mm Direct body. Require 45mm air horns  
 Rover K series 42mm Direct body  
 Volkswagen 2L 16V 45mm Direct body



DBFD1/45  
 DBRVK/42  
 DBVW1/45

**Throttle body options**

Air Control valve connection kit for 2 x twin bodies  
 Air Control valve connection kit for 3 x twin bodies  
 There is a large range of lever options

AVK2T2  
 AVK2T3

**FUEL INJECTION ACCESSORIES**

**Airhorns & Airboxes**

Air Horn, 40mm bore x 20mm long

Air Horn

Air Horn, Carbon Fibre

Air Horn, Carbon Fibre

Air Horn, Carbon Fibre

Air Horn

Air Horn

Air Horn

Air Horn, Carbon Fibre

Air Horn

Air Horn, Carbon Fibre

Air Horn

Air Horn

Air Horn

Air Horn

Air Horn

Air Horn, Carbon Fibre

Air Horn

Air Horn

Air Horn, tapered

Air Horn, Carbon Fibre

Air Horn, tapered

Air Horn, tapered

Air Horn, tapered, with injector position & fuel rail mount

Air Horn, tapered

Air Horn, SFD flange

Air Horn, for SFG 64. Machineable to 70mm bore

Air Horn, curved. 42 bore x 160 path x 88° deg.

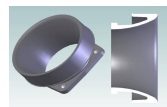
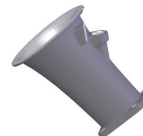
Air Horn, Twin 42mm for TC bodies & DCNF carbs

Air Horn, Twin 45mm for TC bodies

Air Box backplate

Air Horn Grommet 41 - 47mm (66,5 hole)

Air Horn Grommet 50 - 56mm (76.0 hole)



AH40x20  
 AH40x40  
 AHC40x50  
 AHC42x50  
 AHC42x100  
 AH45x19  
 AH45x40  
 AH45x60  
 AHC45x60  
 AH45x90  
 AHC45x90  
 AH45x120  
 AH45x150  
 AH48x19  
 AH48x40  
 AH48x60  
 AHC48x60  
 AH48x90  
 AH48x120  
 AHT48x112  
 AHC50x40  
 AHT50x93  
 AHT51x83  
 AHT51x125IM  
 AHT52x74  
 AHD52x60  
 AH??-98s  
 AH42x160x88  
 ASC42x35  
 ASC45x40  
 ABB2/50  
 AHG41  
 AHG50

**Spacers & curves** Replace ? with bore size. Sizes below 40mm are made to order

Spacer, for twin inlet. ? Diameter x 9,5mm long

Spacer, for twin inlet

Spacer, for twin inlet

Spacer, 4 bolt; SF body

Spacer, 4 bolt; SF body

Spacer, 4 bolt; SF body

Spacer, 4 bolt, 50mm long. With 0, 1 or 2 injector positions

Curved spacer, 45mm, 22.5° bend, SF body

Gasket, Aluminium reinforced polymer foam, for 4 bolt SF body



TS?x9.5  
 TS?x12  
 TS?x19  
 SS?x9.5  
 SS?x19  
 SS?x25  
 SFM?  
 SCS45/22.5  
 SFEG54

**Flange adapters.** For fitting SF bodies. Replace ? With bore size. Sizes below 40mm are made to order

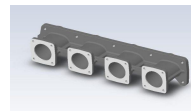
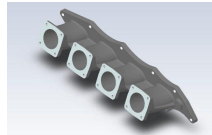
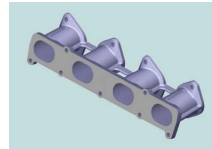
Adapter, SU/Stromberg - SF  
 Adapter, TH,TB,DCOE - SF  
 Adapter, TC,TA,IDF,IDA - SF  
 Adapter, Ford Sigma manifold - SF



SF/SU ?  
 SF/TH ?  
 SF/TF ?  
 SF-FD1

**Manifolds**

Alfa Romeo V6 12V - SF  
 Alfa Romeo V6 24V - SF  
 BMW Mini - SF  
 Chevrolet LS 1,2,6 - SFD  
 Cosworth YB - SF  
 Cosworth Scorpio - SF  
 Ford BDA - SF  
 Ford Zetec - SF  
 Ford Duratec - DCOE  
 Ford Duratec V6 - SF  
 Honda B16 & B18 C5 - SF  
 Honda B16 & B18 C5 - DCOE  
 Honda B18 C1 & C4 - SF  
 Honda S2000 - SF  
 Honda K20 - SF  
 Hyundai Lantra - SF  
 Jaguar V6 - SF  
 Nissan 2L - SF  
 Nissan V6 VQ35 - SF  
 Opel 1,6 - SF  
 Opel XE - SF  
 Opel XE 27° - DCOE  
 Opel XE 34° - DCOE  
 Opel XE 0° - DCOE  
 Opel 2,5 & 3,0L V6 - SFS  
 Peugeot Mi16 2,0L - twin  
 Peugeot TU5 1,6L 16V - ST  
 Peugeot 106 & Citroen C2 1,6L 2004 - ST  
 Peugeot 2L 16V - SF  
 Porsche F6 a/c 2 gaats - SF  
 Porsche F6 a/c 2L 2 gaats 34mm - SF  
 Porsche F6 watergekoeld - SF  
 Porsche GT3 F6 watergekoeld - SF  
 Porsche F6 a/c 3 gaats - SF  
 Porsche F6 Spigot - SF  
 Proton 4G92 / Mitsubishi Colt 1400, 1600 & 1800  
 Renault Megane - SF  
 Renault Clio 172 - SF  
 Rover K - SF injectoren in gasklephuizen  
 Injector Pocket plug  
 Manifold studs, 8x37mm. Kit of 8  
 Fuel rail for manifold



MA02  
 MA03  
 MB01  
 MCT01  
 MF01N  
 MF06  
 MF04  
 MF02N  
 MF07  
 MF12  
 MH03  
 MH06  
 MH04  
 MH05  
 MH07  
 MHI01  
 MJ02  
 MN01  
 MN02  
 MV02  
 MV07  
 MV03  
 MV04  
 MV05  
 MV06  
 MP02  
 MP03  
 MP06  
 MP04  
 MPC01  
 MPC01-34  
 MPC03  
 MPC04  
 PCF01  
 PCS01  
 MPN01  
 MR22  
 MR23  
 MR08N  
 IPP01  
 MS37x8  
 MRF??

## Fuel Rails, injectors and system

Fuel rail, 1 x SF, ST or SS	SFR1
Fuel rail, 2 x SF, ST or SS	SFR2/?
Fuel rail, 3 x SF, ST or SS	SFR3/?/?
Fuel rail, 4 x SF, ST or SS	SFR4/?/?/?
Fuel rail, 5 x SF, ST or SS	SFR5/?/?/?/?
Fuel rail, 6 x SF, ST or SS	SFR6/?/?/?/?/?
Fuel rail mounting for SF, ST and SS bodies - Pico	SFRC3
Fuel rail mounting for SF, ST and SS bodies - Stndd	SFRC2
Fuel rail, Aluminium for 1 twin for TB, TH, TS, TF or TC	TBR20
Fuel rail, Aluminium for 1 twin, as TBR20 but with -6 fitting	TBR30
Fuel rail, Aluminium for 1 twin, with Schrader valve	TBR21
Fuel rail, Aluminium for 1 twin, as TBR21 but with -6 fitting	TBR31
Fuel rail kit for 2 twins with connector to fit TBP, THP, TSP or TFP	TBR22
Fuel rail kit, Aluminium for 2 twins, as TBR22, but with -6 fittings	TBR32
Fuel rail, Aluminium for intermediate twin eg. centre rail for 6 cylinder	TBR2S
Fuel rail, fabricated steel for 2 twins with -6 fittings	TBR2/?/?/?
Pressure regulator housing with -6 fittings (9,4mm Bosch)	RH01
Pressure regulator housing with -6 fittings (7,5mm Bosch)	RH02
Pressure Regulator + Housing with push-on fittings	RIH03
Fuel injector Pico 330cc/min	IN47/330
Remote injector mounting	RIHI
Aluminium injector pocket for fabrication work	IPI2

## Linkages and components

Linkage kit, single select mounting	CLS1
Linkage kit, double select mounting	CLD1
Linkage mounting, TB + TH over	LBO1
Linkage mounting, TB + TH under	LBU1
Linkage mounting, TB, TH, TF under, intake end	LBU2
Linkage mounting - SF	LBF2
Linkage mounting - ST	LBT2
Linkage mounting for Rover K series DTH bodies (singel cable)	LBD1
Linkage, V engines	CLV1
Operating wheel linkage, V engines (<33mm bank offset)	OWK1
Operating wheel linkage, V engines (>33mm bank offset)	OWK2
Linkage, Flat engines - Porsche	CLF1
Multiposition lever adapter	LA01
Linkage ball joint - 5mm	LRJ5B
Linkage rod end - 5mm	LRJ5R
Throttle cable trunnion	MDA35/A
Throttle cable / metre	BC15



## Throttle potentiometers and fittings

Throttle Pot - Colvern CP17	TP1
Throttle Pot - Wabash 971-0002	TP2
Throttle Pot clamp kit - Colvern	TPK1
Throttle Pot clamp kit - Wabash	TPK2
Throttle Pot Loom socket - AMP Econoseal	TPS2
Throttle Pot fitting kit - Weber	TPAK3
Throttle Pot fitting kit - Novotechnik SP, Penny&Giles SRS280	TPAK4
Throttle Pot fitting kit - Marelli PF2C	TPAK5

## Air Bypass Valve fittings

Air distributor, 3 cylinder	DM2/21
Air distributor, 4 cylinder	DM2/22
Air distributor, 5 cylinder	DM3/221
Air distributor, 6 cylinder	DM3/222
Air distributor adapter, 19mm push-on	AFP2B190
Black Nylon tube. Per metre	TN8060
Idle Bypass insert. Replaces idle bleed screw in twin bodies	IBO1

Alons Autosport

5/5